



LIVERMORES
THE ESTATE AGENTS

2 Bedrooms

Maisonette

Located in Dartford

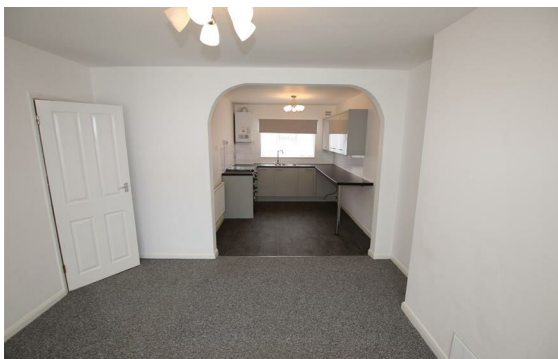
£1,400



lettings@livermores.co.uk

www.livermores.co.uk

01322 311427



LIVERMORES
THE ESTATE AGENTS

1 Hythe Street
Dartford
Kent
DA1 1BE

01322 311427

lettings@livermores.co.uk

www.livermores.co.uk

Welcome to this two-bedroom ground floor maisonette located on Dudsbury Road in Dartford. This property offers a bright and spacious living environment, perfect for individuals or small families seeking comfort and convenience.

As you enter, you will find a well-appointed reception room that provides a welcoming atmosphere, ideal for relaxation or entertaining guests. The kitchen is designed with functionality in mind, making it a pleasure to prepare meals. The two bedrooms are generously sized, ensuring ample space for rest and personal belongings.

One of the standout features of this maisonette is the private rear garden, which offers a tranquil outdoor space for enjoying the fresh air or hosting summer gatherings. Additionally, the property benefits from a driveway, providing convenient off-street parking.

Energy Efficiency Rating:

Agents Note: Whilst every care has been taken to prepare these particulars, they are for guidance purposes only. All measurements are approximate and are for general guidance purposes only and whilst every care has been taken to ensure their accuracy, they should not be relied upon and potential buyers/tenants are advised to recheck the measurements.